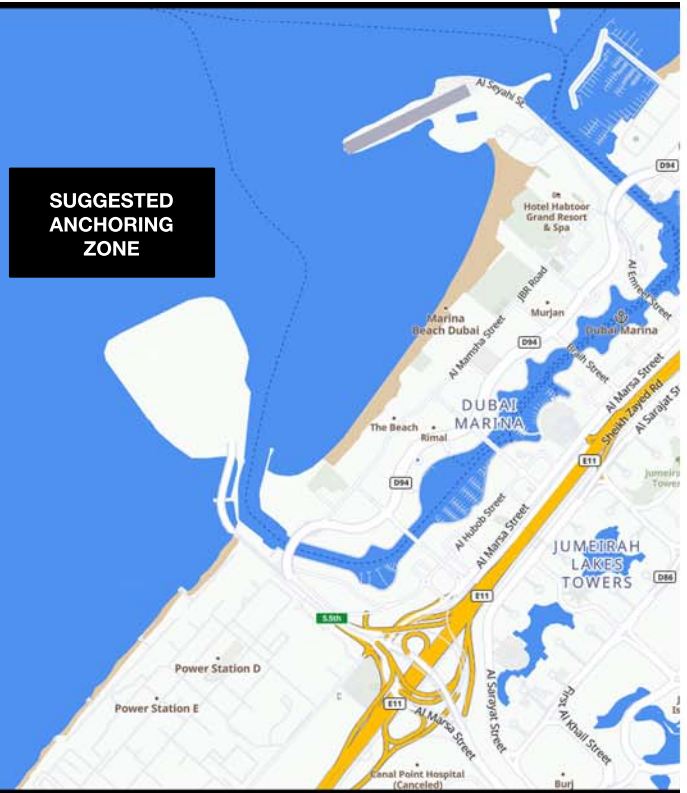


DUBAI MARINA ANCHORAGE OPTIONS

ANCHORING BETWEEN

LAT - 25° 05'.2 LAT - 25° 05'.0
LON - 055° 06'.7 LON - 055° 07'.0

SUGGESTED
ANCHORING
ZONE



Dubai Marina offers a 5-star service in conjunction with Superyacht Middle East (JLS Yachts LLC) for dock access and assistance for an anchoring situation.

All bookings through logistics@jlsyachts.com and payments through JLS Yachts LLC / Superyachts Middle East on yachts account.

FEE STRUCTURES : DAILY

TENDER CHARGE : AED 70 / PER METER (PER DAY)

PRICE INCLUSIONS

- Usage of wash-down dock for all logistical moves required including provisions, crew charge, parcel delivery and etc.
- Usage of charter dock for V.I.P. loading /offloading.
- Removal of garbage
*(Early morning removal only)
*This needs to be pre-booked).
- V.I.P. parking (limited time)
- Access to docks 24/7.
- Security assistance from Dubai Marina with no hold-ups or misunderstandings.
- Supply of gate swipe card (temporary) if required.

CONDITIONS

- Photo/Name/Registration/Insurance Copies of tender to be used sent in advance
- 2 hours notice for arrival on V.I.P. dock (enable marina to arrange caddy cars).
- Garbage collection only at 7am with advance notice.

CLUB HOUSE MARINA

